



**REM  
POWER**®

Rheinland Elektro Maschinen

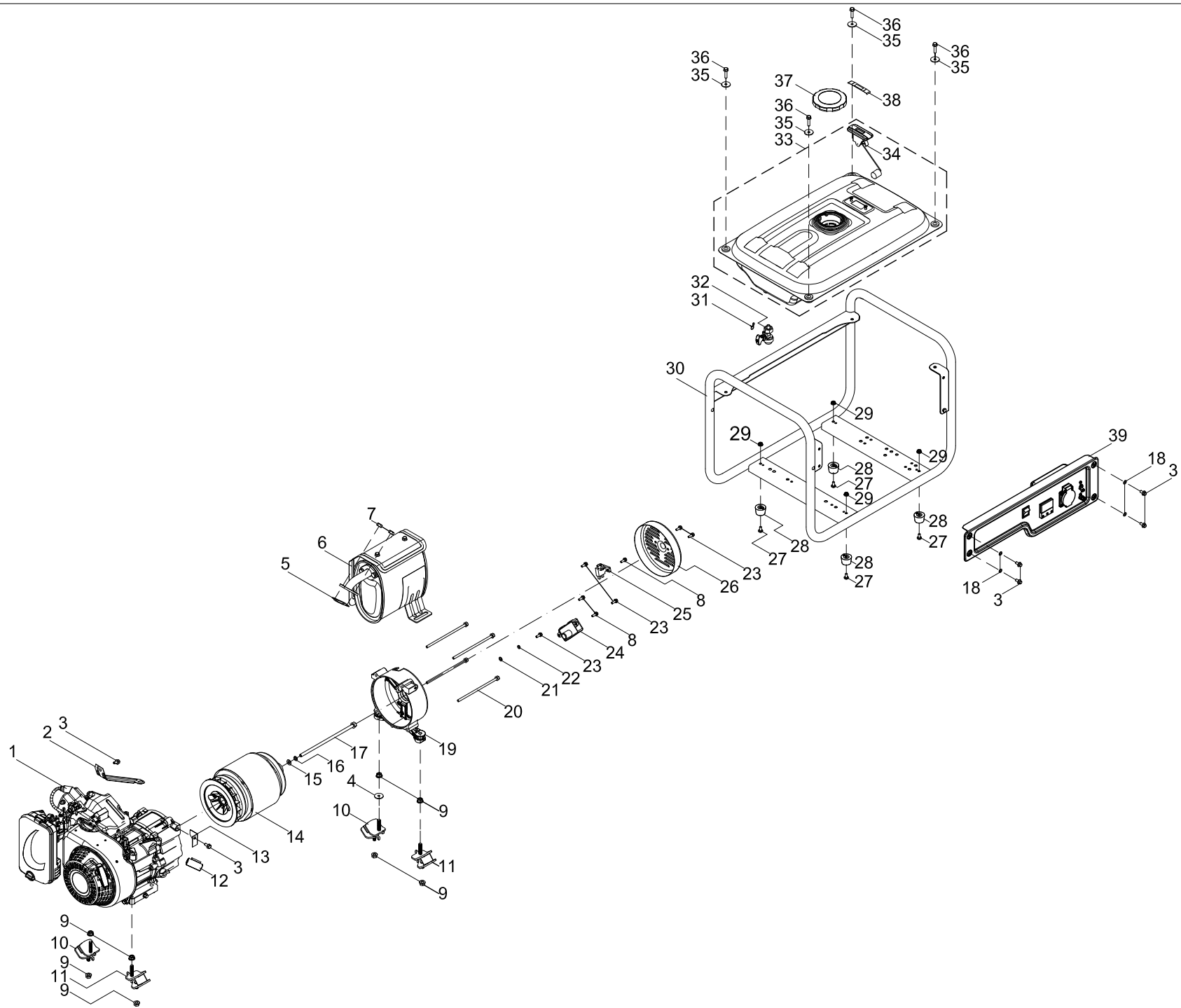


## Spare parts list Generator **GSEm 3300 SB**

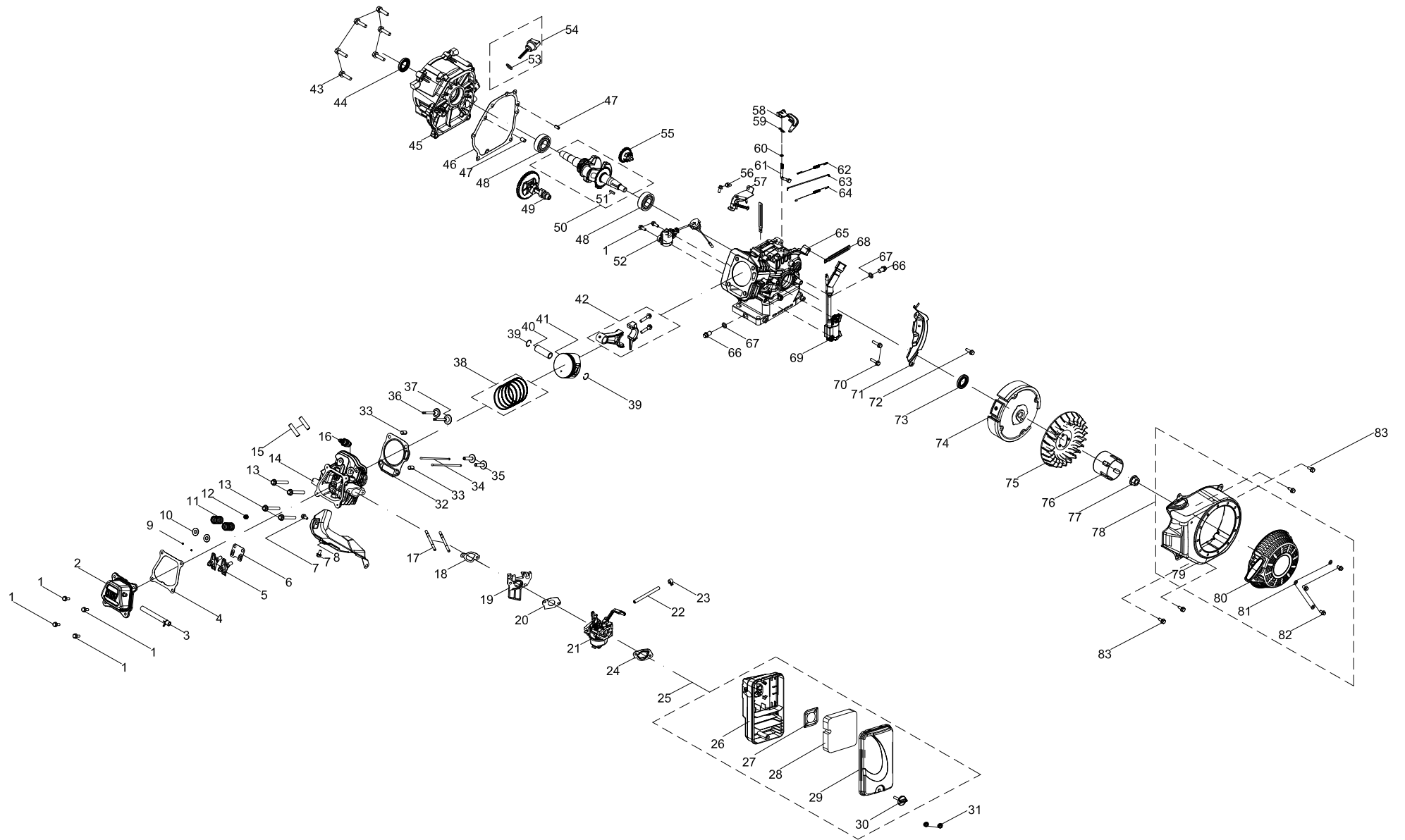


[www.rem-power.com](http://www.rem-power.com)

REM POWER SEE, str. 8 Indzikovo No.24, P.O.Box 2, 1040 Skopje, R.M, T: +389 2 3063 180, E: office@rem-power.com



No.	Order Code	Name	Quantity
1	8811000001001	Engine	1
2	8811000001002	Air Filter Bracket	1
3	8811000001003	Bolt, M6x12	6
4	8811000001004	Washer, $\phi 8 \times 2 \times \phi 24$	1
5	8811000001005	Gasket, Muffler	1
6	8811000001006	Muffler	1
7	8811000001007	Nut, M8	2
8	8811000001008	Bolt, M5x18	3
9	8811000001009	Nut, M8	8
10	8811000001010	Damping Pad	2
11	8811000001011	Damping Pad	2
12	8811000001012	Clip	1
13	8811000001013	Support Block	1
14	8811000001014	Alternator	1
15	8811000001015	Washer, $\phi 8$	1
16	8811000001016	Washer, $\phi 8$	1
17	8811000001017	Bolt, M8x1x220	1
18	8811000001018	Gasket, Drain Bolt	4
19	8811000001019	Rear Bracket	1
20	8811000001020	Bolt, M6x165	4
21	8811000001021	Washer, $\phi 5$	1
22	8811000001022	Washer, $\phi 5$	1
23	8811000001023	Bolt, M5x14	5
24	8811000001024	Voltage Regulator	1
25	8811000001025	Brush	1
26	8811000001026	End Cover	1
27	8811000001027	Screw, M6x12	4
28	8811000001028	Damping Pad	4
29	8811000001029	Nut, M6	4
30	8811000001030	Frame Assembly	1
31	8811000001031	Clamp	1
32	8811000001032	Fuel Switch	1
33	8811000001033	Fuel Tank	1
34	8811000001034	Fuel Meter	1
35	8811000001035	Washer, $\phi 6.5 \times 2 \times \phi 25$	4
36	8811000001036	Bolt, M6x25	4
37	8811000001037	Fuel Cap	1
38	8811000001038	Oily Sense Clip	1
39	8811000001039	Control Panel	1



No.	Order Code	Name	Quantity
1	8811000001040	Bolt, M6×16	6
2	8811000001041	Valve Cover	1
3	8811000001042	Breather Hose	1
4	8811000001043	Gasket, Valve Cover	1
5	8811000001044	Rocker Arm Assembly	2
6	8811000001045	Rocker Arm Base	1
7	8811000001046	Bolt, M6×10	2
8	8811000001047	Shroud	1
9	8811000001048	Valve Locker	4
10	8811000001049	Valve Spring Seat	2
11	8811000001050	Valve Spring	2
12	8811000001051	Intake Valve Seal	1
13	8811000001052	Bolt, M8×60	4
14	8811000001053	Cylinder Head	1
15	8811000001054	Stud, M8×35	2
16	8811000001055	Spark Plug	1
17	8811000001056	Stud, M6×96	2
18	8811000001057	Gasket, Carburetor Insulator	1
19	8811000001058	Insulator	1
20	8811000001059	Gasket, Carburetor	1
21	8811000001060	Carburetor	1
22	8811000001061	Fuel Hose, φ4×φ10×126	1
23	8811000001062	Clamp	1
24	8811000001063	Gasket, Carburetor	1
25	8811000001064	Air Filter Assembly	1
26	8811000001065	Air Filter Base Assembly	1
27	8811000001066	Air Filter Baffle	1
28	8811000001067	Air Filter Element	1
29	8811000001068	Air Filter Cover	1
30	8811000001069	Bolt	1
31	8811000001070	Nut, M6	2
32	8811000001071	Gasket, Cylinder Head	1
33	8811000001072	Pin, φ10×16	2
34	8811000001073	Push Rod	2
35	8811000001074	Tappet	2
36	8811000001075	Exhaust Valve	1
37	8811000001076	Intake Valve	1
38	8811000001077	Piston Ring Set	1
39	8811000001078	Circlip	2
40	8811000001079	Piston Pin	1
41	8811000001080	Piston	1
42	8811000001081	Connecting Rod Assembly	1
43	8811000001082	Bolt, M8×32	6

44	8811000001083	Oil Seal, $\phi 25 \times \phi 41.25 \times 6$	1
45	8811000001084	Crankcase Cover	1
46	8811000001085	Gasket, Crankcase	1
47	8811000001086	Pin, $\phi 8 \times 14$	2
48	8811000001087	Bearing, TM6205	2
49	8811000001088	Camshaft	1
50	8811000001089	Crankshaft	1
51	8811000001090	Woodruff Key	1
52	8811000001091	Oil Sensor	1
53	8811000001092	O-Ring, $\phi 15.8 \times 2.5$	1
54	8811000001093	Dipstick	1
55	8811000001094	Governor Gear	1
56	8811000001095	Bolt, M6 $\times$ 12	2
57	8811000001096	Governor Gear Bracket Assembly	1
58	8811000001097	Governor Lever	1
59	8811000001098	Cotter Pin	1
60	8811000001099	O-Ring, $\phi 5.2 \times 1.9$	1
61	8811000001100	Governor Gear Shaft	1
62	8811000001101	Governor Spring	1
63	8811000001102	Throttle Linkage	1
64	8811000001103	Idle Spring	1
65	8811000001104	Crankcase	1
66	8811000001105	Earth Bolt	2
67	8811000001106	Washer, $\phi 10 \times 1.5 \times \phi 16$	2
68	8811000001107	Clip	1
69	8811000001108	Ignition Module	1
70	8811000001109	Bolt, M6 $\times$ 25	2
71	8811000001110	Lower Shield	1
72	8811000001111	Bolt, M6 $\times$ 20	1
73	8811000001112	Oil Seal, $\phi 25 \times \phi 41.25 \times 6$	1
74	8811000001113	Flywheel	1
75	8811000001114	Cooling Fan	1
76	8811000001115	Starter Cup	1
77	8811000001116	Nut, M14 $\times$ 1.5	1
78	8811000001117	Recoil Starter	1
79	8811000001118	Blower Housing	1
80	8811000001119	Recoil Starter	1
81	8811000001120	Washer, $\phi 6$	3
82	8811000001121	Bolt, M6 $\times$ 10	3
83	8811000001122	Bolt, M6 $\times$ 14	4